

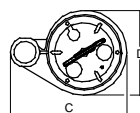
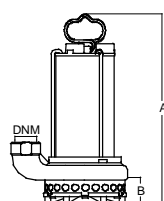
# Elettropompe sommergibili SEMISOM 24 V DC per acque torbide e luride

Electric submersible pumps SEMISOM 24 V DC for dirty and sewage water

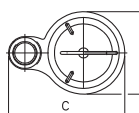
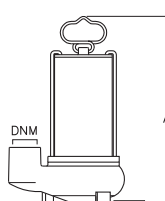


## Caratteristiche tecniche 2800 rpm • Performance characteristics 2800 rpm

24 V Corrente Continua Direct Current	Caratt. Nominali Nominal Charact. HP KW A			Cavo Cable m	DNM	Passaggio solidi Ø Ø Solids passage	P o r t a t a • F l o w												
							m <sup>3</sup> /h	0	1,8	6	9	12	15	18	21	24	27	30	39
							l/min	0	30	100	150	200	250	300	350	400	450	500	650
							Prevalenza manom. totale in metri • Total manometric head in meters												
<b>Acque Torbide Girante Aperta • Dirty Water Open Impeller</b>																			
<b>SEMISOM</b>	<b>190</b>	<b>DC</b>	0,5	0,37	24	5	1"1/4	5	10,5	9,5	7	4	1						
<b>SEMISOM</b>	<b>320</b>	<b>DC</b>	0,75	0,55	28	5	1"1/4	13	11,5	11	9	7,5	5,5	3	0,5				
<b>Acque Luride Girante Arretrata • Sewage Water Vortex Impeller</b>																			
<b>SEMISOM</b>	<b>265 L</b>	<b>DC</b>	0,75	0,55	28	5	1"1/2	40	8,5	8	6,5	5,5	4	3	1				
<b>Acque Luride Girante Bicanale • Sewage Water Double-Channel Impeller</b>																			
<b>SEMISOM</b>	<b>262 SL</b>	<b>DC</b>	0,75	0,55	28	5	2"	32	10,5	10	9	8	7	6	4,5	3	1		



**Semisom**



**Semisom L - SL**

Tipo Type	Misure mm Dimensions mm				Peso Weight Kg
	A	B	C	D	
<b>Semisom 190 DC</b>	385	50	225	164	10,2
<b>Semisom 320 DC</b>	400	50	225	164	12,4
<b>Semisom 265 L DC</b>	440	50	230	162	13,0
<b>Semisom 262 SL DC</b>	440	60	250	172	16,1