

# DRENOSOM



# Electric submersible pumps DRENOSOM

for water with high abrasive contents



## APPLICATIONS

Ready-to-use, resistant and handy electric submersible pump.

Made in wear-resistant materials, the pump is suitable to convey water containing sand, loam, mud, drilling debris and other abrasive particles also with suspended solids whose size is up to 7 mm.

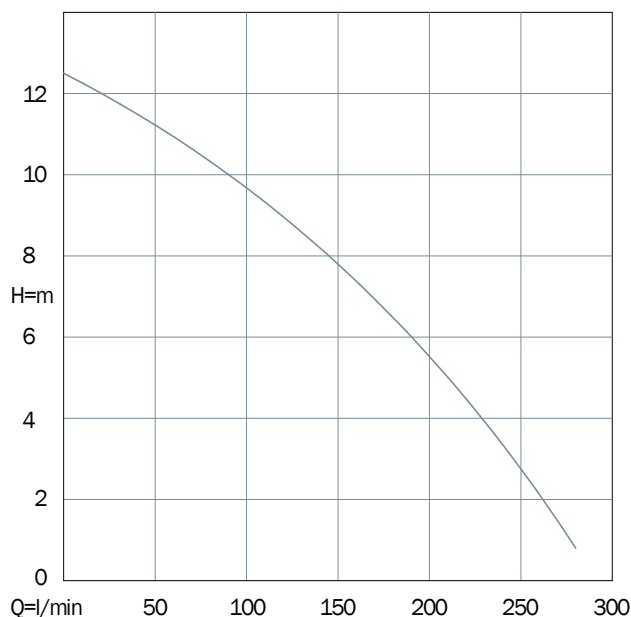
It is recommended to drain water in construction sites or in flooded areas.

The electric pump is supplied with 10 meters power cable and Schuko plug.

## CHARACTERISTICS

|  |               |
|--|---------------|
| IP rating  | IP68          |
| Duty   | Continuous S1 |
| Maximum immersion depth (m)                        | 7             |
| Maximum number of starts per hour                  | 40            |
| Maximum temperature of the liquid pumped (°C)      | 40            |
| PH of the liquid pumped                            | 6 - 10        |
| Density of the liquid pumped (kg/dm <sup>3</sup> ) | <1,1          |

## APPLICATION RANGE



## CONSTRUCTION

The asynchronous, rewindable, single-phase electric dry motor with short circuit rotor and insulation class F, is oversized to assure reliability in case of severe applications. Windings with phase insulators to protect the motor from power peaks, as a guarantee of a highly-trustworthy product.

Resin-insulated cable kit so to prevent penetration of water inside the motor

Shafts machined on ball bearings and mechanical seals locations

Angular contact, double row ball bearing on the pump side

Back-to back double mechanical seal with oil chamber in-between as a guarantee of a lubrication in any position the pump should run

V-Ring seal to protect the mechanical seal


## MATERIALS

|                                   |                                     |
|-----------------------------------|-------------------------------------|
| Handle, tie-rods and motor casing | Stainless steel AISI304             |
| Shaft                             | Stainless steel AISI420B            |
| Cover                             | Mechanical cast iron EN GJL-250     |
| Pump volute, foot and impeller    | Wear resistant cast iron EN GJL-700 |
| Lower mechanical seal             | Silicon carbide                     |
| Upper mechanical seal             | Silicon carbide and Graphite        |
| Elastomers                        | NBR rubber                          |
| Cable                             | Neoprene H07RN8-F                   |

# Electric submersible pumps DRENOSOM

for water with high abrasive contents

## PERFORMANCE DATA 2 poles 50 Hz

| Vortex impeller<br> | Code    | Version |                | P2  |      | Max |      | DNM (GAS) | Ø solid passage (mm) | Q<br>m <sup>3</sup> /h<br>l/min<br>H (m) | Flow |      |      |     |     |     | Dimensions (mm) |     |    |     | Weight<br>kg |      |
|---|---------|---------|----------------|-----|------|-----|------|-----------|----------------------|--|------|------|------|-----|-----|-----|-----------------|-----|----|-----|--------------|------|
|   |         |         |                | hp  | kW   | A   | µF   |           |                      |  | 0    | 3    | 6    | 9   | 12  | 15  | 16,8            | A   | B  | C   |              | D    |
|   |         |         |                |     |      |     |      |           |                      |  |      |      |      |     |     |     |                 |     |    |     |              |      |
| <b>NEW</b> DRENOSOM 280   | SM280+G | 230 V   | 1phase + float | 0,6 | 0,44 | 3   | 12,5 | 2"        | 7                    | H (m)                                    | 12,8 | 11,6 | 10,2 | 8,5 | 6,2 | 3,4 | 1,2             | 405 | 44 | 207 | 154          | 15,3 |

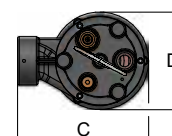
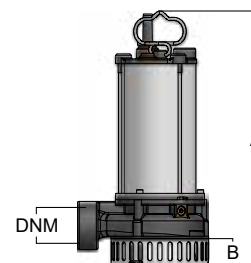


### SUPPLIED WITH

10 meters power cable and Schuko plug

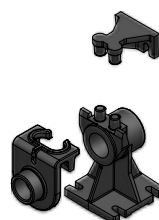


Integrated capacitor and thermal protection with automatic reset

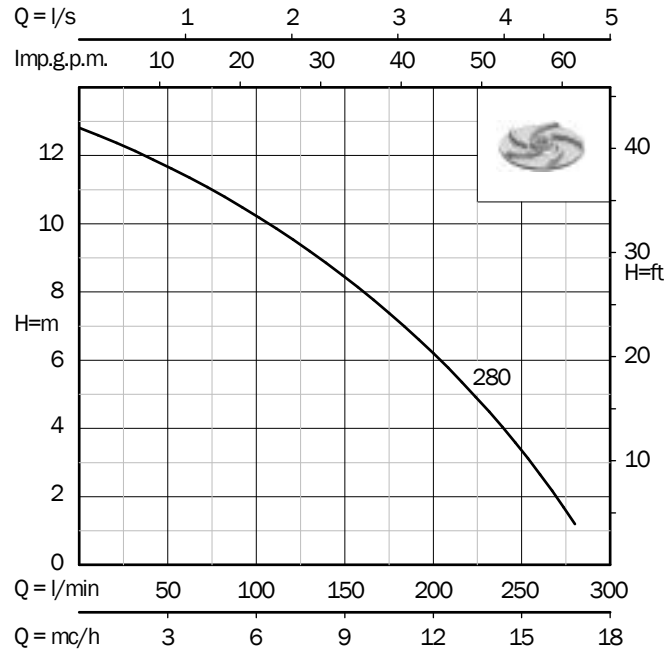


## ACCESSORIES

| Code     | Description  |
|----------|--|
| 04105043 | Guide rail kit male threaded inlet G2" - female threaded discharge G2" (¾" guide poles are not included) |



**PERFORMANCE CURVES - 2 poles 50 Hz**



**ILLUSTRATION OF AN INSTALLATION WITH GUIDE RAIL KIT**

